

# Floor Care

## WESTEX Mopping System

### Mop Bucket/Wringer Combo Packs

- Mop Bucket is made of tough structural foam.
- Resists chemicals, cracking, dents and abrasion.
- Has a dirt trap feature which traps heavier dirt particles and keeps them from recirculating.
- Needs fewer water changes.
- Downward Pressure Wringers are Duramold® constructed for heavy use.
- Mop Bucket Dolly glides along on 4 casters to avoid slips and slops.
- Rugged Duramold® construction holds up to tough treatment.
- Full 26 quart capacity within 3" casters.



## Heavy Duty Buckets

*Perfect for every cleaning job.*

- Zinc-plated bail resists rusting or bending.
- Button-like bail attachments keep bail from pulling loose.
- Smooth skin makes for easy cleaning, less bacteria.
- Thick rim with supporting ribs make these buckets sturdy.
- Molded-in graduations for convenient measuring.
- Convenient spout permits neat pouring.



- 1) 10 Quart Size — Red or Gray
- 2) 14 Quart Size — Red or Gray

## CRETE CLEAN

### Concrete & Cement Cleaner

Industrial strength powdered cement detergent. **Crete Clean** powers out the heaviest grease and oil spots from concrete surfaces.

**Packed:**  
50 lb. pails



# Floor Care

# Mops

## Dust Pans

**No. 6** - 12" black enamel, 20 gauge steel, has durable one piece construction with corrugated ribs for added stiffness and strength. Comes in a baked enameled finish with beveled edge. **Packed:** 1 dozen/carton



**No. 20** - 12" plastic. The perfect economy dust pan. Won't rust, corrode or dent. Smooth lip hugs floor for easy sweeping pickup. **Packed:** 1 dozen/carton

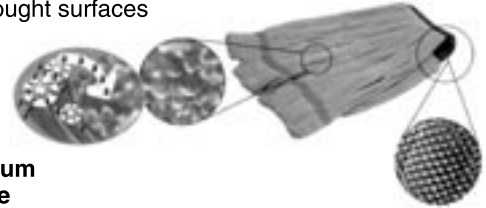
## Microfiber Heavy Duty Mops

- Great for healthcare
- Long Lasting
- Exceptional absorbency
- No linting
- 30% polyamide, 70% polyester
- Great for rough surfaces



All packed 12

Blue color microfiber  
**MM34 - Medium**  
**MM38 - Large**



## Floor Squeegees

A highly-effective, disposable floor squeegee. The Water Wand features a "moss" (soft), double rubber blade secured in a galvanized steel channel. The Water Wand is particularly effective on grouted or uneven surfaces.

**Available:** 18", 22", 30"



## Looper Mops

COTTON BLEND

- Looped end for greater coverage and absorbency
- Outlasts cut end mops

Available in medium and large

**Packed:** 1 dozen/case



## Mop Heads

Cotton, wide band, 8 ply. Available in 4 convenient sizes.

- 16 oz.
- 20 oz.
- 24 oz.
- 32 oz.

**Packed:** 1 doz./case



## Yacht Mops (Cotton)

Top quality 4 ply cotton yarn. Economical to use. 12 oz. mop head attached to stick. Good for small area mopping

**Packed:** 1 dozen/carton

## SPONGE MOPS

### Economy



### Economy Mops

A heavy duty sponge mop with bright plated hardware and strong spring action. Good sturdy mop for small area use.

**Sold:** Individually

**Refills:** 12 per case fits all standard sponge mops

### Better



### "Quickie" Mop

Durable and efficient. Designed with a variety of self-wringing features.

**Packed:** 6 per case

**Refills:** 12 per case



### Best

### Roller Mop

- Super absorbent sponge
- Scrubber for stubborn debris
- Heavy duty wringer

**F8011** - pk. 6

**SPONGE REFILL**  
**F8011R** - pk 12



# Floor Care Products

## Mop Sticks



**Jaw Type**  
Wood Handle  
**OUR BEST BUY**



**Center Bolt**  
Wood Handle  
no screws to lose



**Quick Change**  
All Plastic  
no wasted time



**Gripper**  
All Plastic  
won't chip, dent, or rust



### "Caution" WESTEX Wet Floor Signs

Excellent for use in wet areas.

Offered in bright "safety" yellow.

Sold: individually

### Twist Mop



*New Ratchet System*

- EURO synthetic mop head
- Heavy duty handle with adjustable grip

F8002 - pk. 6

REFILL F8002R - pk 6



### Portable Mop Bucket

12 qt. 2-roller wringer pail. Portable & lightweight.



### Yacht Mop Bucket

15 qt. bucket with mop twister. Ideal for wringing out Yacht Mop.



### Galvanized Pail

Hot dipped galvanized metal.  
Size: 10 qts.  
Std. Pack: 12

### Dust Mops

#### Swivel King Metal Frame Mops

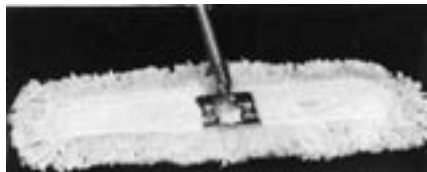
Top quality yarn 6/8 ply, 3" trim. New heavy duty swivel dust mop frame allows dusting sideways or lengthwise. 360 degree swivel frame complete with handle.

Sizes: 18" 24" 30" 36" 48"

#### Refills

Floor King refills fit both wood block and metal frame.

Sizes: 18" 24" 30" 36" 48"



### Dust Control Spray

The ideal way to control dust & dirt.

**When sprayed on dust mop or cloth, dust is attracted to it like a magnet.** Easy economical way to control dust. Lemon scented. **Non-flammable.**

Packed: 12 cans/case



### Lobby Dust Pan

Plastic hopper with strong PVC handle. Pan snap-locks in use and releases to dump or carry. Space saving hanger for storage. The true-edge of pan conforms to floor—no need for repeated sweeping.

Sold: Individually



1-800-548-6785

# Floor Care

## The Latest Advance In Gym Finishes

### **WESTEX Durable Gym Finish**

Makes gym floors look better longer

Saves time and money because one coat is usually all that is needed. No Other Finish Offers So Many Outstanding Qualities

#### Features:

- Rugged wear resistance
- Resists rubber burns created by athletic games
- Resists alcohol, most acids and alkalies
- Deep, brilliant lasting gloss
- Keeps wood surfaces sound...looking better longer
- Makes wood floors stand up and stand out

Dry for light foot traffic in 12 hours.

Average coverage per gallon - first coat 600 sq. ft.

**Packed:** 5 gallon pails



## WESTEX FLOOR CARE PRODUCTS

Durable • Economical • Easy To Use

### 1) To Strip:

#### **SUPER STRIP Non-Ammoniated Stripper**

Powerful, fast-acting, efficient, economical. Especially designed to remove even multiple coats of aged, built-up finish. Safe to use on all floors. Not recommended for unsealed wood. Penetrates and softens hard to remove wax films, removes paste, liquid or solvent waxes and films of most finishes. It prepares the floor for a perfect re-application of floor finish.

**Packed:** 5 gallon pails

### 2) To Seal:

#### **SEAL BRITE**

##### **A Must For Longest Lasting Floor Protection**

A great sealer or undercoat for all floor finishes and waxes. It seals all porous floors and eliminates powdering while helping to prevent staining. Seal Brite is highly resistant to water and alkaline cleaners.

**Packed:** 5 gallon pails

### 3) To Shine:

#### **ULTRASHEEN Scrubble Floor Finish**

An entirely **new concept** in floor finishes. Now you can get a brilliant, tough finish that stays beautiful through repeated scrubbing. You get a high initial gloss, a film that's tough and heel mark resistant and a long lasting shine that stays on through washing.

**ULTRASHEEN** is slip resistant (does not contain wax) and spray buffs beautifully...to a mirror-like lustre.

**Packed:** 5 gallon pails



1-800-548-6785

# Floor Care/Non-Slip Floor Coverings

## CT 15 AUTOMATIC FLOOR SCRUBBER



### 4/5 GALLON • 14" - BRUSH DRIVE

Extremely robust but light, the new handle makes the machine even easier to manoeuvre thanks to the ergonomic design of the handles, enhancing any work conditions, and does not strain the operator—*suits people of all heights.*

- The CT15 offers exceptional productivity in tight areas.
- Scrubs in difficult to reach areas
- Solution control with automatic stop (Solenoid valve)
- Removable recovery tank
- Height-adjustable handle
- Easy-to-use control panel
- Brush control with delayed automatic stop
- CFS (Center Flow System)
- High quality performance vacuum
- Easy to transport



## Westex Floor Machine Pads

1. **TAN—Buff:** A mildly abrasive pad.
2. **GREEN—Scrub:** A medium abrasive pad for wet scrubbing
3. **BLACK—Strip:** A very aggressive stripping pad
4. **WHITE—Polish:** A non-abrasive dry polishing pad.

All pads packed 5 per case

Sizes available: 7¾" to 28"



## Westex Floor Machines

These economical, quiet, and dependable day to day units are loaded with heavy duty features.

- Available in various sizes
- 1 HP motor
- Power cord reaches up to 50'
- Pad holder not included



## NON-SLIP FLOOR COVERING SURE-FOOT

- A slip-resistant epoxy coating designed for use on concrete, steel, wood, fiberglass, aluminum, tile, etc.
- Effective anywhere slippery conditions exist
- Each can covers approx. 25 sq. ft.
- Long lasting
- Clear only

Sold: by the can

